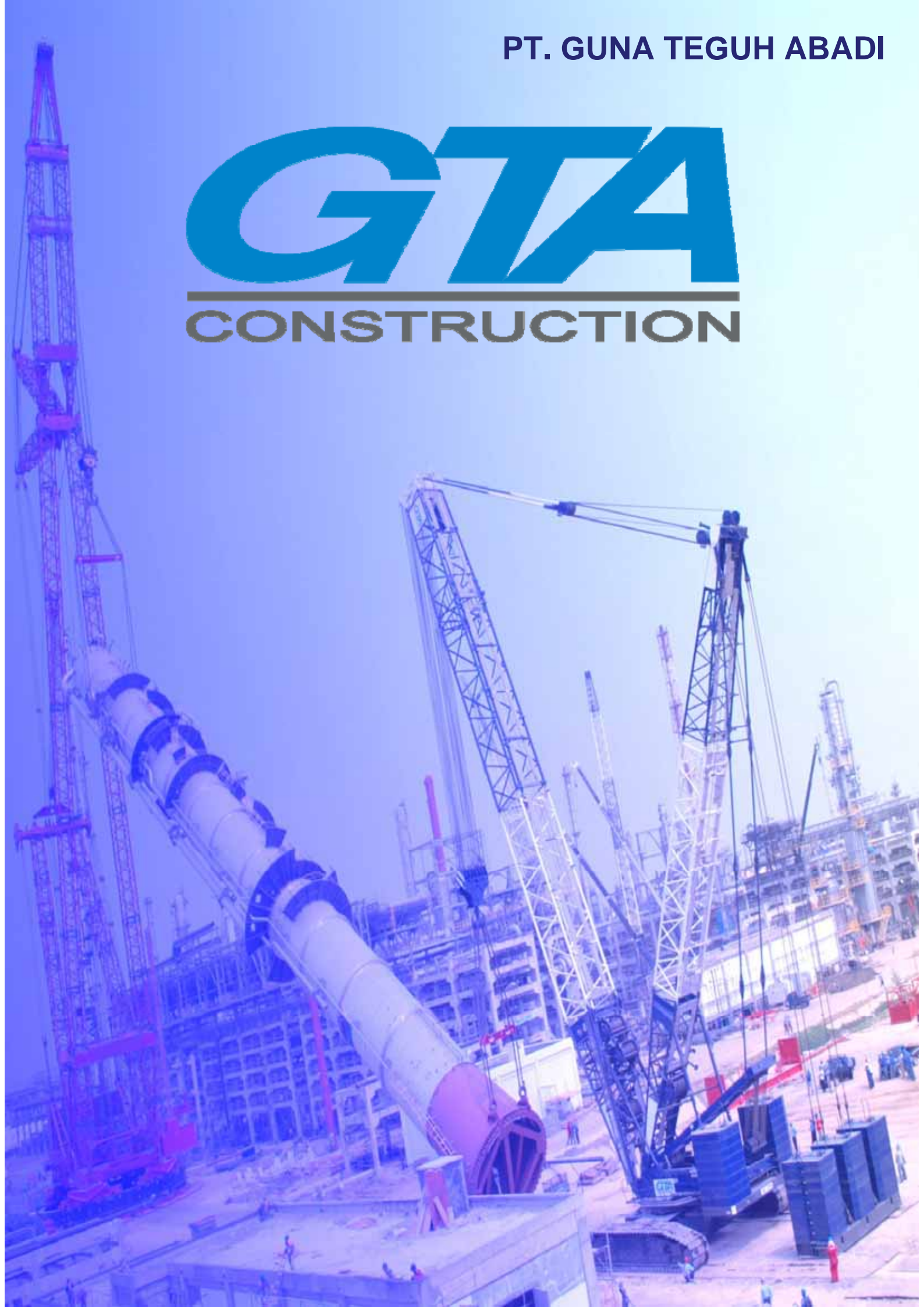


PT. GUNA TEGUH ABADI

GTA

CONSTRUCTION





ABOUT PT GUNA TEGUH ABADI

- PT Guna Teguh berdiri sejak 27 Juni 1994 sebagai perusahaan kontraktor profesional yang memiliki kemampuan khusus dibidang pekerjaan instalasi alat-alat berat, mesin-mesin, dan transportasi yang berkantor pusat di Cilegon - Banten.
- Setelah berkembang lebih dari satu dekade, dengan pertimbangan segmen dan permintaan pasar, GTA mengembangkan usaha dan kompetensi dibidang manufacturing steel structure dan pekerjaan pemipaan dengan ditunjang oleh tenaga ahli yang berkualitas dan berpengalaman, dengan segmen pasar di pabrik petrokimia, oil & gas, pabrik semen, power plant dan factory maintenance.



'PT Guna Teguh Abadi' (GTA) has been established since 1994 as a highly specialist Heavy Lift contractor – providing solutions in Inland Transportation, Installation, Maintenance and Decommissioning in both Structures and Machinery construction for numerous 'Heavy Industries' within Indonesia. Such Heavy Industries including: Oil and Gas Refineries, Petrochemical, Power and Cement Plants; and Manufacturing Factories.

As a company, GTA takes particular pride in supporting our Clients Piping and Steel Structure Manufacturing requirements, through the provision of skilled and experienced local manpower.

With our Head Office based in Cilegon, Banten Province, Indonesia; the company has enjoyed consistent growth for over a decade, by providing our clients with excellence-in-service to satisfy the considerable (and increasing) market demand for Heavy Lift solutions, within Indonesia.



CONTENTS

1. **Pages 1 up to 5 Heavy Lifting Work.**
 - Oil and Gas Plant.
 - Chemical Plant.
 - Fertilizer Plant.
 - Cement Plant.
6. **Assembling and Installation for Steel Structure.**
7. **Transportation.**
8. **Piping Work for Geothermal Pipe Line.**
9. **Piping Work for Process Area.**
(Shop Fabrication 140.000 D/I, Field Installation 155.000 D/I)
10. **Big Vertical Press Machine & Die Casting Press Machine Installation Work.**
11. **Activity for Indoor Factory.**
12. **Page 12 & 13, Shutdown and Maintenance.**
14. **Page 14 & 15, GTA Construction Equipment.**
16. **GTA Tools & Machine.**
17. **Some of Certification Award from Client.**
18. **Head Office & Site Activities.**

Vision.

To become the Leading Construction Company in Indonesia, capitalising on both human and natural resources, in order to support Indonesia's continual development.

Mission.

- To always provide excellence in Construction Services through professionalism, rigorous project scheduling and an ongoing commitment to HSE Regulations.
- To continuously innovate, develop and expand the company's construction capabilities in order to achieve dynamic and ongoing growth.
- To ensure that the company's most precious resources, its employees, enjoy a working environment based on trust, respect, a healthy work/life balance and investment in continuous professional development. Most importantly, to provide a working environment where employee safety is the first priority.

Company Objectives :

1. Competent and Reliable employees.
2. Sufficient Numbers of Tools.
3. Sufficient Numbers of Tools Equipment.
4. Permanent Office & yard facility.
5. Good Management Function.
6. Establish Partnership and good relationship with bank and other financial institution.
7. Extend Marketing network with good company campaign.



- Chemical Plant.
- Fertilizer Plant.
- Cement Plant.



Installation for Absorption Tower



Installation for Deethylenizer



Installation for Deisohexanizer



Installation for Deisohexanizer



Installation for Deisobutanizer



Cuting Shell Top Regenerator and Lift Down the Cover Include Cyclone Unit



Repair for Planum of Regenerator



Replacement for Regenerator Stack



Replacement for Catalyst Cooler



Replacement for Catalyst Cooler



Dismantling for Planetary



Dismantling for Planetary



Installation for Shell Kiln



Assembly and Shifting Grate Cooler



Installation for Kiln & Tire



Installation for Conveyor



Installation for Siding Conveyor



Welding Shell Kiln



Welding Shell Kiln



Welding Shell Kiln



Welding Shell Kiln



Replacement for Dryer



Installation for Desalination unit



Replacement for Heat Exchanger



Replacement for Flare Tip



Installation for CO2 Absorber



Replacement for Flare Shell Gas Drum



Replacement for Flare Shell Gas Drum



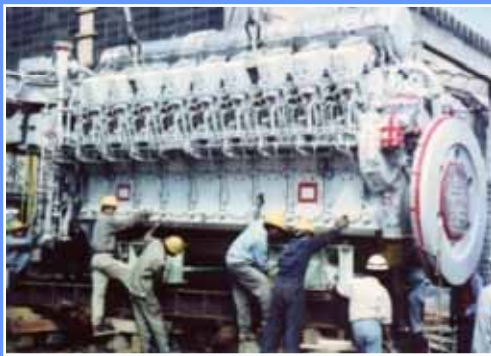
Installation for CO2 Absorber



Installation of Drum for Revamping Work



Installation for Turbine Generator



Installation for Engine Generator



Installation for Prilling Tower



Installation for Slug Catcher



Installation for Boiler Package



Installation for Amine Contactor



Installation for Reactor

Assembling and Installation for Steel Structure



Assembling and Installation for Steel Structure by
Module Method



Assembling and Installation for Steel Structure by Module Method



Assembling and Installation for Building Steel Structure

Transportation



Transportation for Urea Reactor



Transportation for CCR Structure



Transportation for Calciner



Transportation for Main Colum



Transportation for Main Colum



Transportation for Absorption Tower



Transportation for Heat Exchanger

Piping Work for Geothermal Pipe Line



Pipe Line for Geothermal Power Plant



Pipe Stringing



Pipe Line for Geothermal Power Plant



Pipe Welding

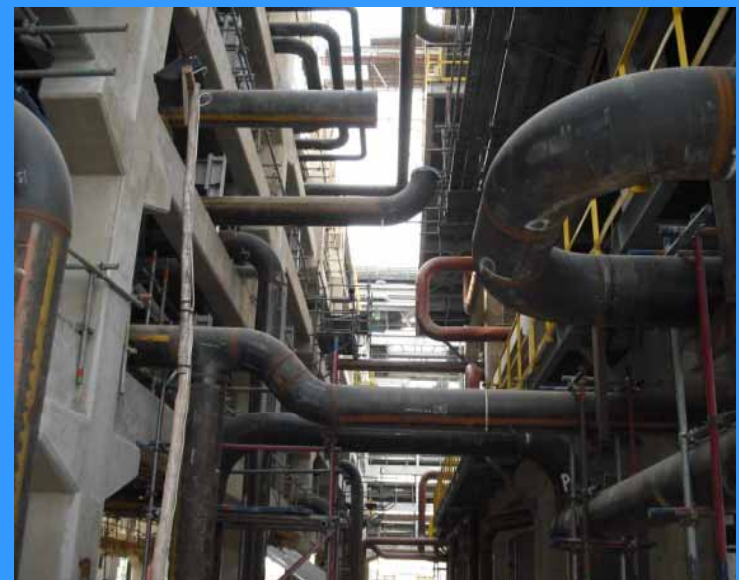


Pipe Line for Geothermal Power Plant



Pipe Welding

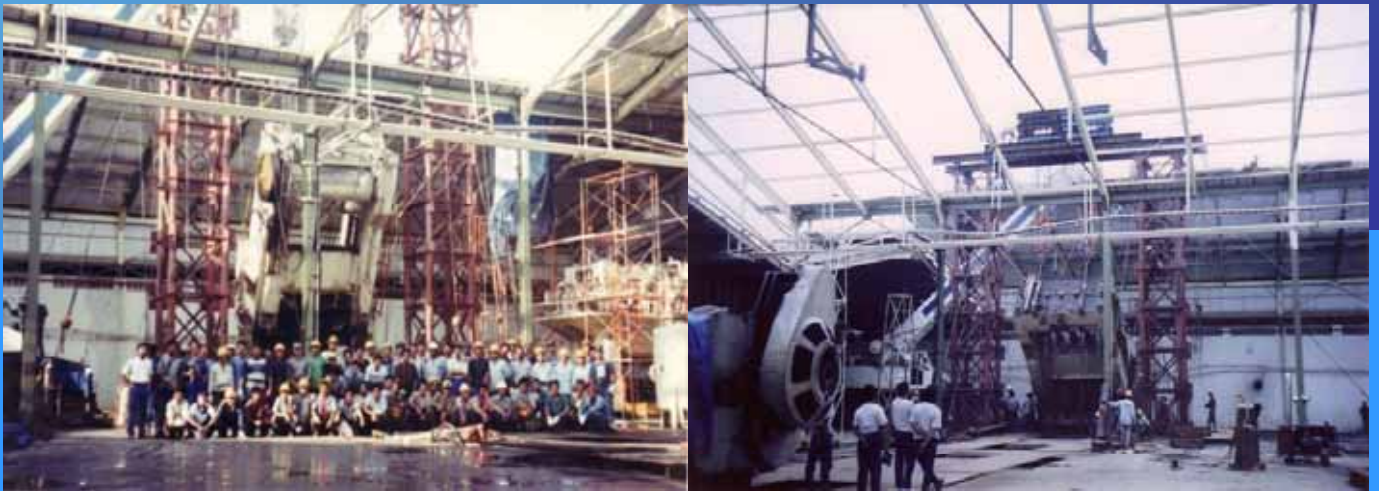
Piping Work for Process Area
(Shop Fabrication 140.000 D/I, Field Installation 155.000 D/I)



Big Vertical Press Machine & Die Casting Press Machine Installation Work.



Installation for 1,250 Ton Die Casting Press Machine



Installation for Vertical Press Machine



Assembling for Die Casting



Installation for 1.600 Ton Die Casting Press Machine

Activity for Indoor Factory

Number 1~4 (Unloading, Assembling & Installation 1,250 Ton Die Casting Press Machine)



Installation for Engine Generator



Installation for Gravity Unit



Conveyor for Cam-Shaft Line



Installation for Crank-Shaft & Cam-Shaft Machine Line

Shutdown and Maintenance



Cleaning & Repair for Heat Exchanger Tube-Bundles



Cleaning & Repair for Heat Exchanger Tube-Bundles



Re-tubing for Radiant Tubes



U – Bend Tube Welding



Repair for Shell of Dryer

Shutdown and Maintenance



Re-tubing for Oil Refinery Furnace Radiant & Convection Tubes



Over Haul for Turbine Compressor



Over Haul for Turbine Compressor



Re-tubing for Dryer's Tubes

GTA Construction Equipment



SL-6000 (550 ton Cap) No. 1
and
SL-6000 (550 ton Cap) No. 2



CKE-2500-2 (250 ton Cap) No. 1 ~ 5



450 ton C/C American



GTA Construction Equipment



Prime Mover



Forklift and Loader



Cranes



Sky Lift



Bus



Minibus and Big Bus



Tronton and Pick-up

GTA Tools & Machine



Some of Certification Awards from Clients



Head Office and Site Activities



Cost Control & Accounting



Warming-up



Morning Daily Meeting



Administration



Procurement



Job Briefing as per Division



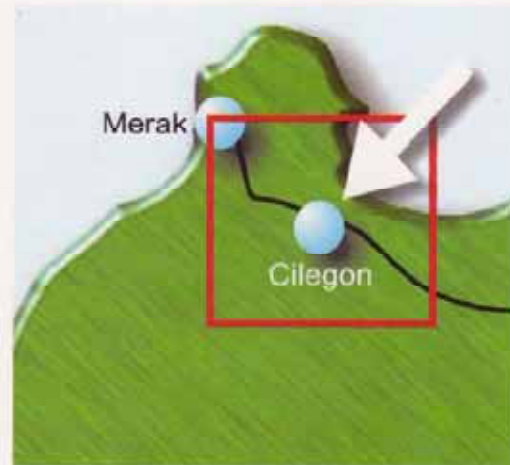
Job Briefing as per Division



Safety Talk Before Going to Job Site



West Java - Indonesia



Cilegon - West Java



HEAD OFFICE :

Jl. Raya Bojonegara RT-01 / RW-04 Desa Kedaleman Kec. Cibeer, Kotamadya Cilegon, Banten Indonesia (Beside Toll Road Jakarta – Merak Km.88)

Telp. (62-254) 575 1341, 575 1342, 575 1343 Fax. (62-254) 575 1344

e-mail : gunateguh.ab@gtaconstruction.co.id website: <http://www.gtaconstruction.co.id>